



MIDLAND

Schedule
a tour!

\$730,000

17337 Ackerson Blvd
Homesite 13



THE CENTRAL

2,762

SQUARE FEET

3

BEDROOMS

3

BATHS

2

CAR GARAGE

1

STORY

Private Study with Glass Doors - Included Lanai Skylights - Finished Lower Level

- Great Room Fireplace Detail
- Master Bedroom Ceiling Detail
- Custom Kitchen Cabinetry
- Quartz Countertops Throughout

[Contact Sales Consultant for Details](#)

Estridge

@MidlandInWestfield



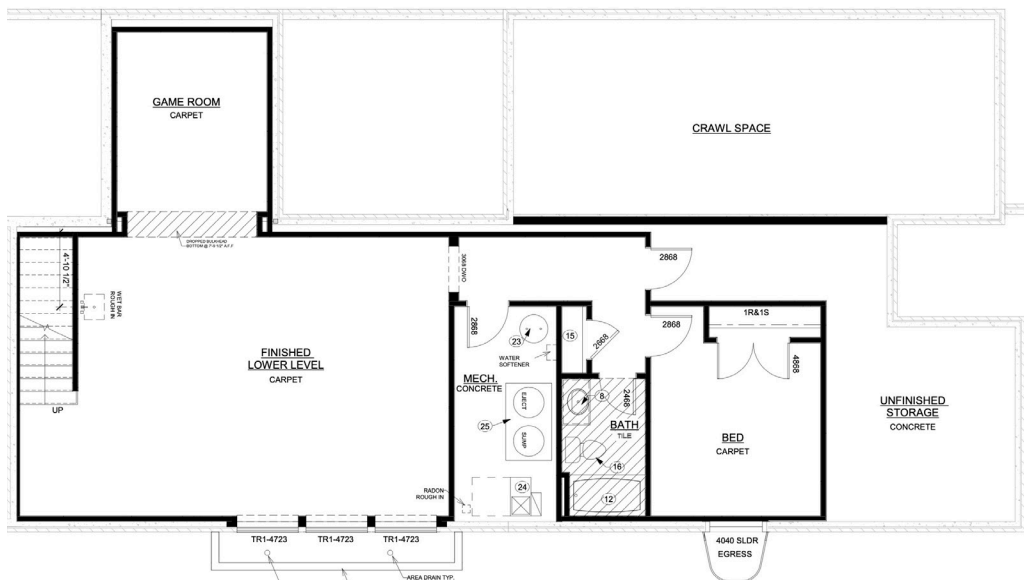


17337 Ackerson Blvd
The Central
Modern Tudor

Main Level



Lower Level



@MidlandInWestfield



The artistic renderings of the floorplan and front elevation may not reflect the exact features of the home being offered and are subject to change without notice.
©2023 Estridge Homes

