



MIDLAND

July
Completion
\$786,900

17344 Pinellas Ave
Homesite 75



THE BRIDGETON

3,384

SQUARE FEET

4

BEDROOMS

3.5

BATHS

2

CAR GARAGE
+ HOBBY

2

STORIES

Private Study with Glass Doors - Main Level 8' Doors - Finished Lower Level

- Friend's Entry Wall Detail
- Master Bedroom Ceiling Detail
- Custom Kitchen Cabinetry
- Quartz Countertops Throughout

Contact Sales Consultant for Details

Estridge

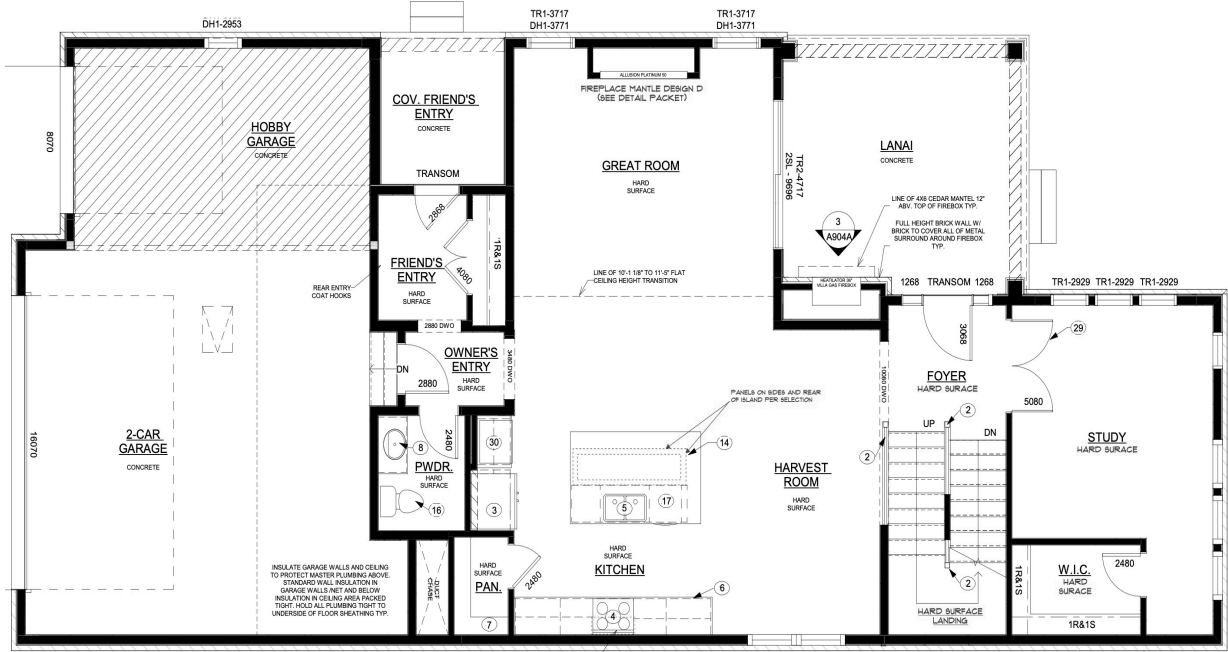
@MidlandInWestfield



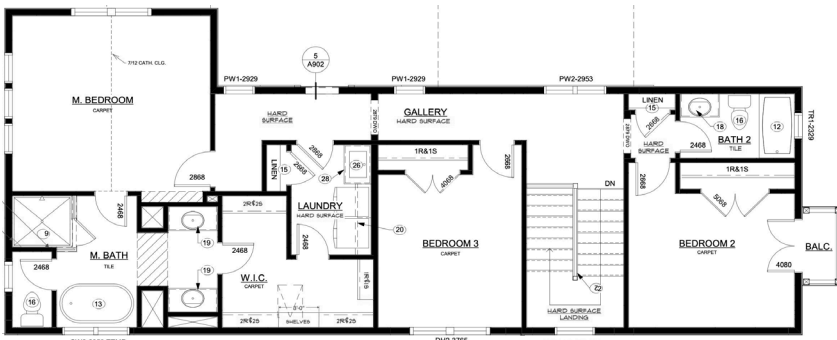


17344 Pinellas Ave
The Bridgeton
Traditional Farmhouse

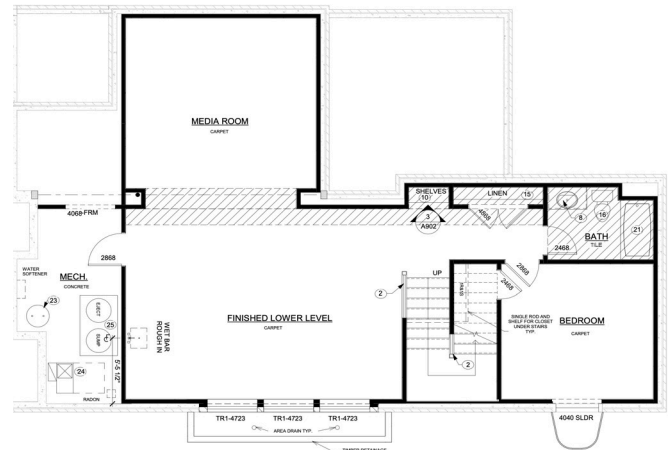
Main Level



Upper Level



Lower Level



@MidlandInWestfield



The artistic renderings of the floorplan and front elevation may not reflect the exact features of the home being offered and are subject to change without notice.
©2023 Estridge Homes

