



June
Completion

\$664,900

1984 Granville Drive
Homesite 659



2,638

SQUARE FEET

3

BEDROOMS

2

FULL BATHS

2

HALF BATHS

2

CAR GARAGE
+EXTENSION

2

STORIES

Covered Lanai with Fireplace - Private Study with Glass Doors - Finished Lower Level

- Master Bedroom Ceiling Detail
- Relaxing Coffee Porch
- Foyer Ceiling Detail
- LG Kitchen Appliances

Contact Sales Consultant for Details



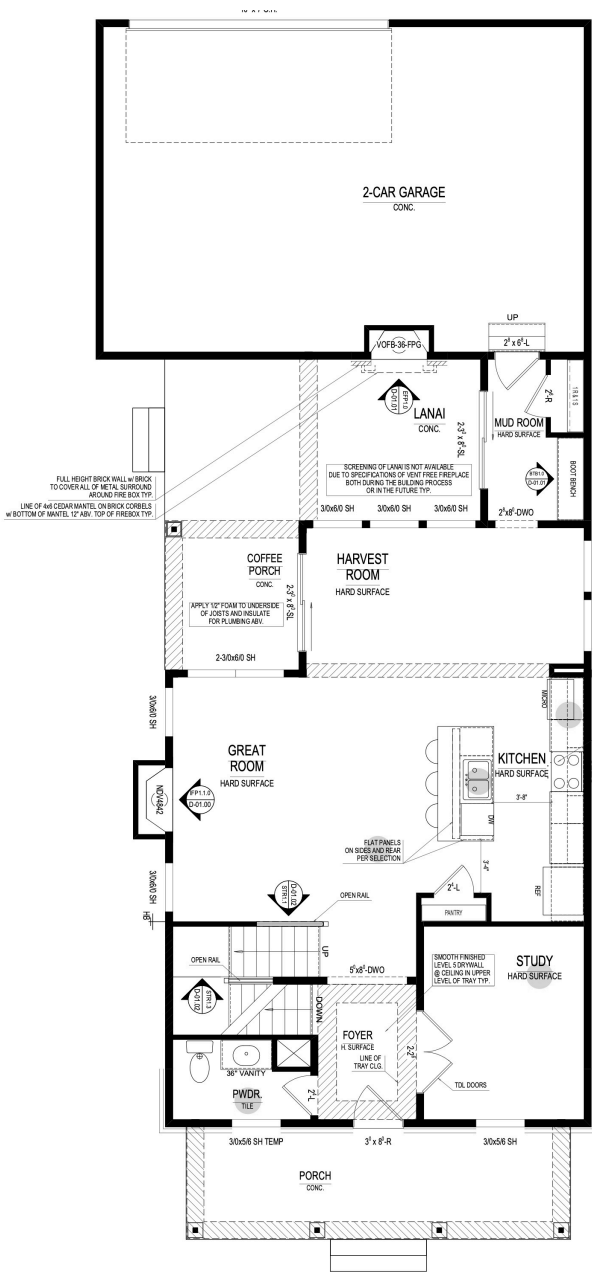
www.estridgehomes.com | @estridgehomes



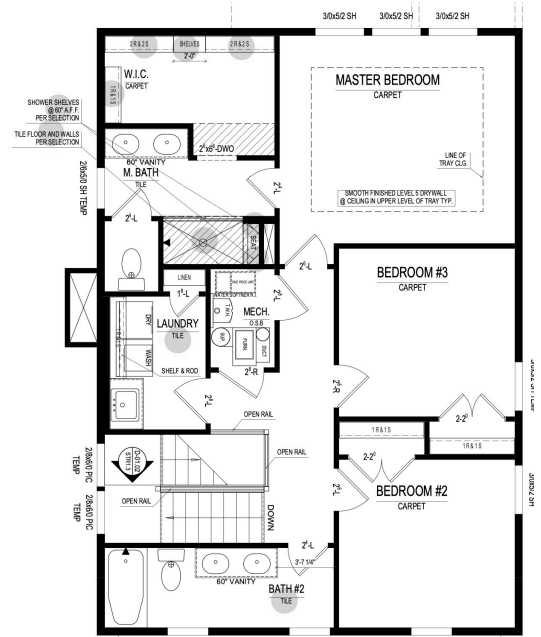


**1984 Granville Drive
Cottage Collection
The Princeton**

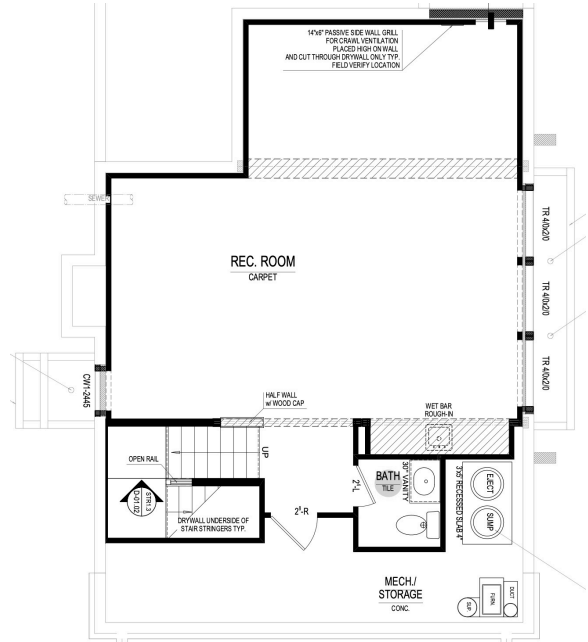
Main Level



Upper Level



Lower Level



www.estrighthouse.com | @estrighthouse

The artistic renderings of the floorplan and front elevation may not reflect the exact features of this home being offered and are subject to change without notice. ©2020 Estridge Homes

