



# MIDLAND

Schedule  
a tour!

\$550,000

17348 Ackerson Blvd  
Homesite 26



## THE WHITING

1,897

SQUARE FEET

3

BEDROOMS

2.5

BATHS

2

CAR GARAGE

2

STORIES

Private Study with Built-In Desk & Glass Doors - Welcoming Front Porch

- Friend's Entry Wall Detail
- Master Bedroom Ceiling Detail
- Custom Kitchen Cabinetry
- Quartz Countertops Throughout

Contact Sales Consultant for Details

*Estridge*

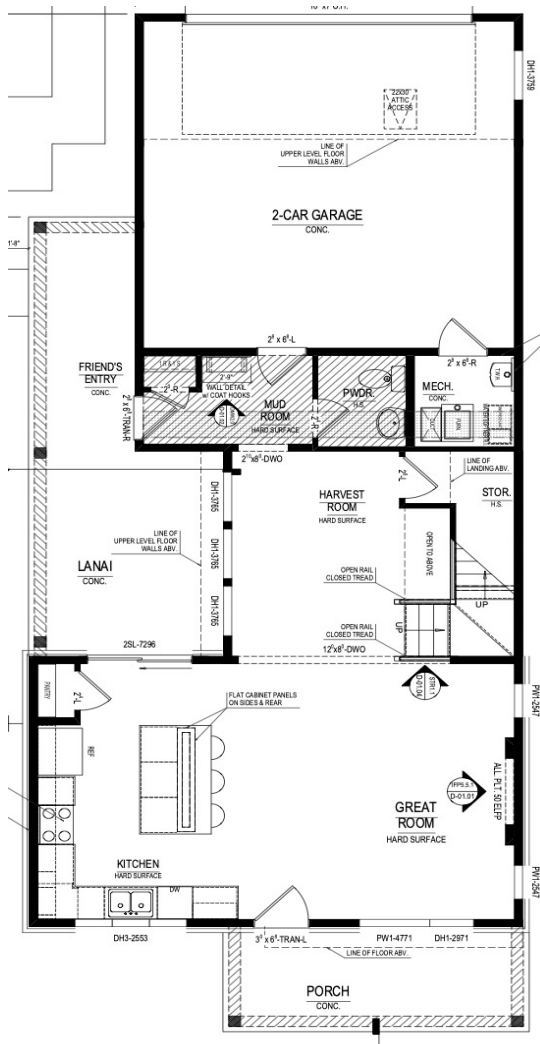
@MidlandInWestfield



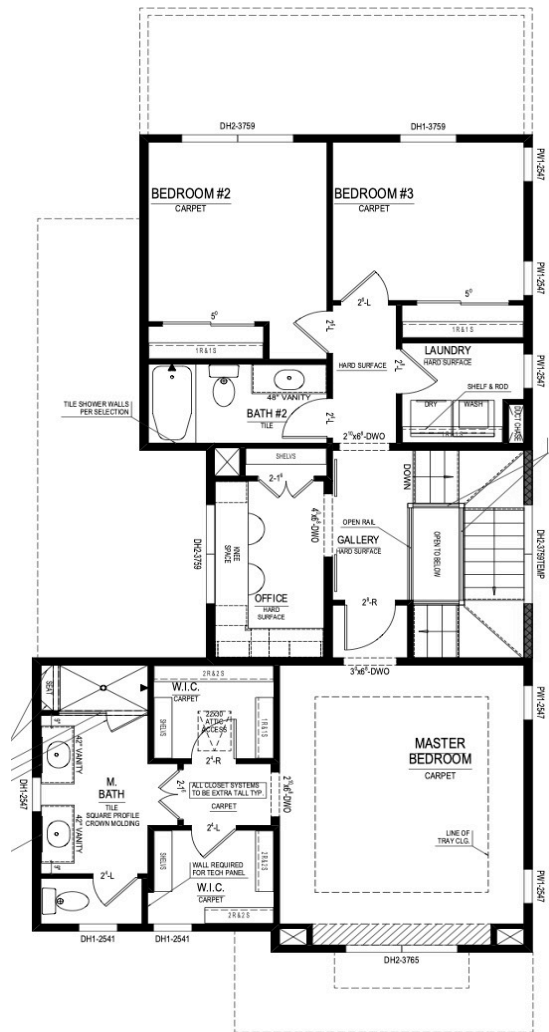


17348 Ackerson Blvd  
The Whiting  
Modern Farmhouse

Main Level



Upper Level



@MidlandInWestfield



The artistic renderings of the floorplan and front elevation may not reflect the exact features of the home being offered and are subject to change without notice.  
©2023 Estridge Homes

