



MIDLAND

Schedule a tour!

\$735,900

17337 Ackerson Blvd  
Homesite 13



## THE CENTRAL

2,762

SQUARE FEET

3

BEDROOMS

3

BATHS

2

CAR GARAGE

1

STORY

Private Study with Glass Doors - Included Lanai Skylights - Finished Lower Level

- Great Room Fireplace Detail
- Master Bedroom Ceiling Detail
- Custom Kitchen Cabinetry
- Quartz Countertops Throughout

Contact Sales Consultant for Details

*Estridge*

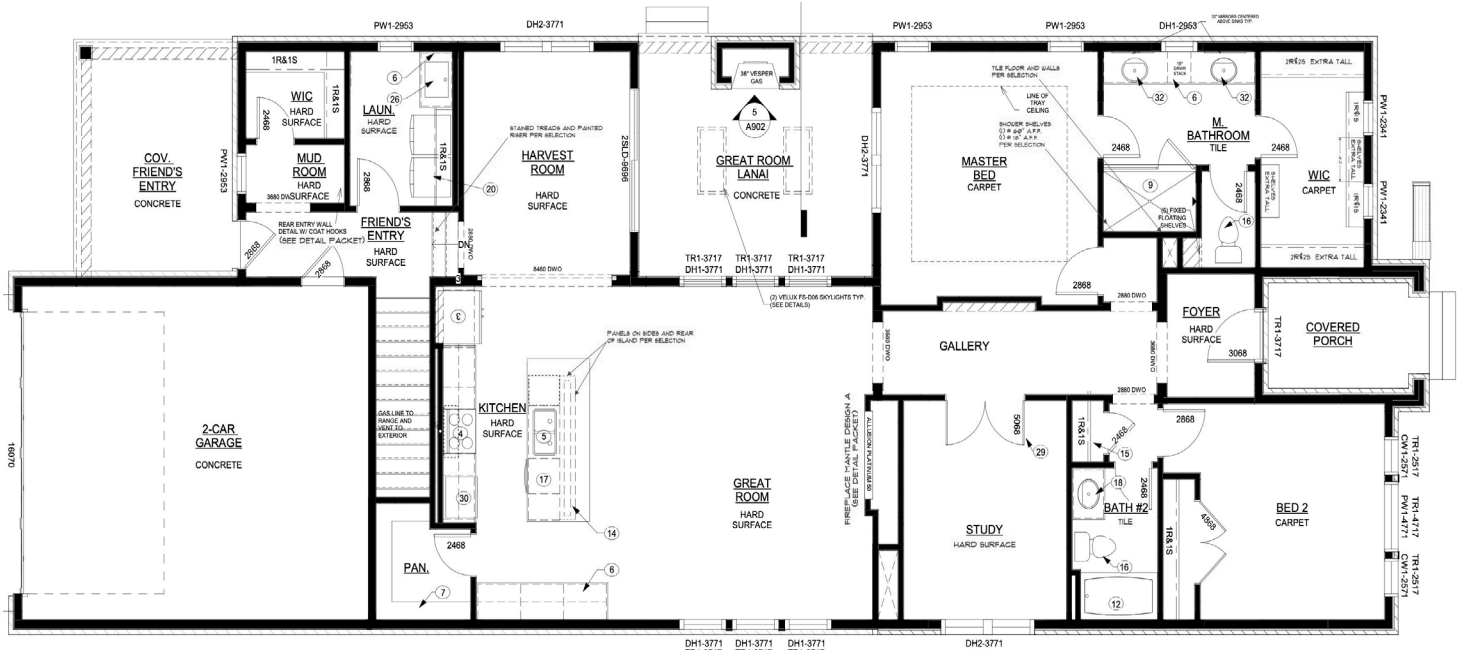
@MidlandInWestfield



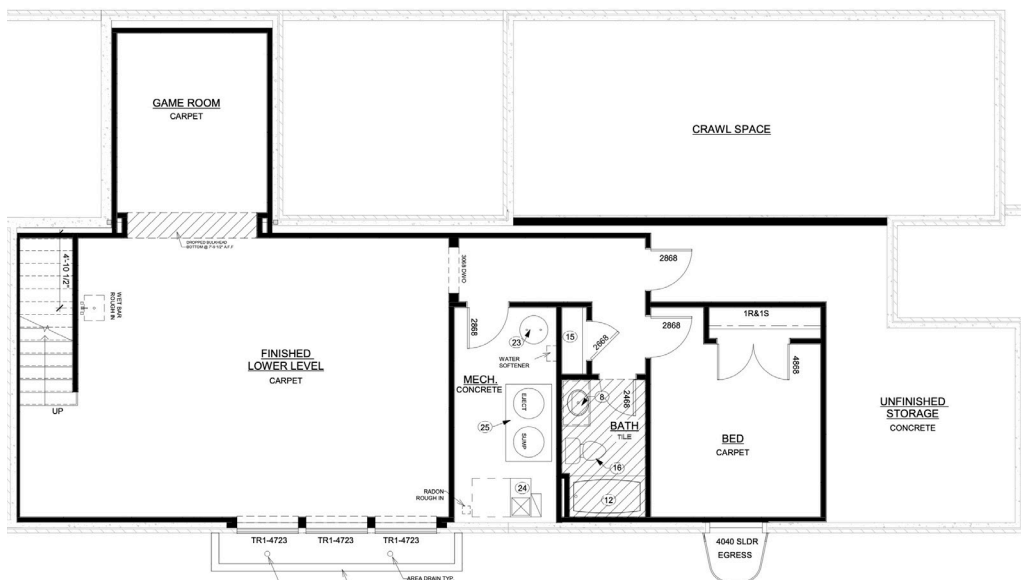


17337 Ackerson Blvd  
The Central  
Modern Tudor

Main Level



Lower Level



@MidlandInWestfield



The artistic renderings of the floorplan and front elevation may not reflect the exact features of the home being offered and are subject to change without notice.  
©2023 Estridge Homes

