



# MIDLAND

Schedule  
a tour!

\$769,000

17345 Ackerson Blvd  
Homesite 15



## THE PENN

3,109

SQUARE FEET

4

BEDROOMS

4.5

BATHS

2

CAR GARAGE

2

STORIES

Master on the Main Level - Private Study with Glass Doors - Finished Lower Level

- Friend's Entry Wall Detail
- Master Bedroom Ceiling Detail
- Custom Kitchen Cabinetry
- Quartz Countertops Throughout
- Full Lawn Irrigation

**Contact Sales Consultant for Details**

*Estridge*

@MidlandInWestfield



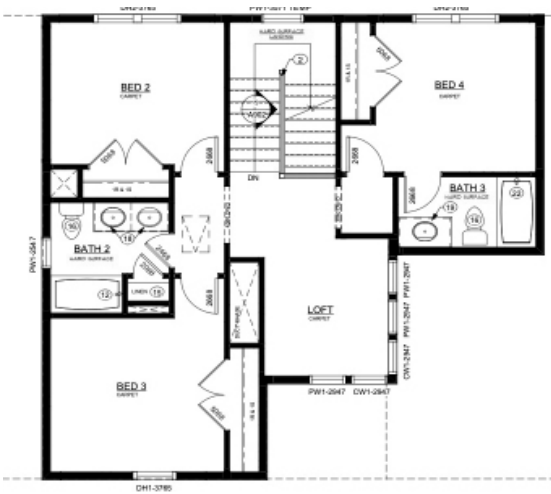


17345 Ackerson Blvd  
The Penn  
Modern Farmhouse

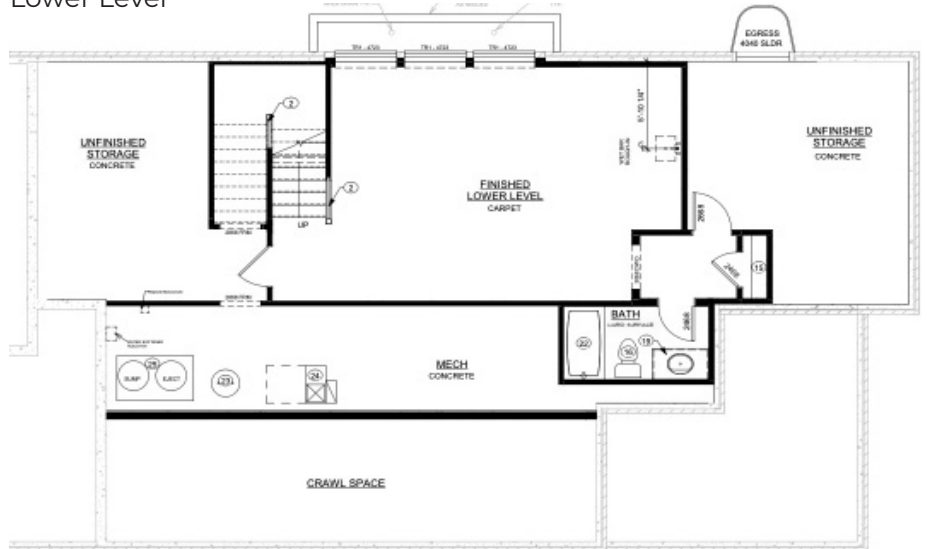
Main Level



Upper Level



Lower Level



@MidlandInWestfield



The artistic renderings of the floorplan and front elevation may not reflect the exact features of the home being offered and are subject to change without notice.  
©2023 Estridge Homes

